

aster

Processed on: 2025-11-07 14:19:59

ASP version: 3.6.0-alpha

asp_plot version: 1.18.0

DEM Summary

Property	Value
DEM File	run-DEM.tif
Dimensions (px)	5275 x 5050
GSD (m)	14.17
CRS	EPSG:32610
Nodata (%)	29.4
Elevation Range (m)	-23.3 to 4363.1
Reference DEM	/Users/ben/Desktop/asp-plot-examples/aster/out_stereo/run-200m-DEM.tif
Acquisition Date	2017-07-31 19:07:28 UTC

Processing Parameters

Runtime Summary

Step	Runtime
Bundle Adjust	N/A
Stereo	0 hours and 14 minutes
point2dem	0 hours and 0 minutes

Reference DEM:

out_stereo/run-200m-DEM.tif

Bundle Adjust Command:

Bundle adjustment not run

Mapproject Commands:

Reconstructed from output GeoTIFF metadata (mapproject writes no log file); session type and grid size are the resolved values.

```
mapproject -t aster --t_srs EPSG:32610 --tr 15 --t_projwin 549397.5 5172592.5 625612.5 5245012.5
out_stereo/run-200m-DEM.tif out-Band3B.tif out-Band3B.xml out-Band3B_proj.tif
```

```
mapproject -t aster --t_srs EPSG:32610 --tr 15 --t_projwin 549397.5 5172652.5 625612.5 5244982.5
out_stereo/run-200m-DEM.tif out-Band3N.tif out-Band3N.xml out-Band3N_proj.tif
```

Stereo Command:

```
stereo -t aster --stereo-algorithm asp_mgm --subpixel-mode 9 --aster-use-csm out-Band3N_proj.tif out-Band3B_proj.tif
out-Band3N.xml out-Band3B.xml out_stereo_proj/run out_stereo/run-200m-DEM.tif --corr-seed-mode 1 --sgm-collar-size 256
--compute-point-cloud-center-only --threads 8
```

point2dem Command:

```
point2dem -r earth --auto-proj-center --errorimage out_stereo_proj/run-PC.tif
```

Report Generation Command:

```
asp_plot --directory /Users/ben/Desktop/asp-plot-examples/aster/ --stereo_directory out_stereo_proj/ --dem_filename run-
DEM.tif --reference_dem /Users/ben/Desktop/asp-plot-examples/aster/out_stereo/run-200m-DEM.tif --plot_geometry False
--subset_km 5.0 --reuse_selections /Users/ben/Desktop/uw-github/asp_plot/reports/ASTER-asp-plot-
report_figure_selections.yml --report_filename /Users/ben/Desktop/uw-github/asp_plot/reports/ASTER_mapproj-asp-plot-
report.pdf
```

Input Scenes

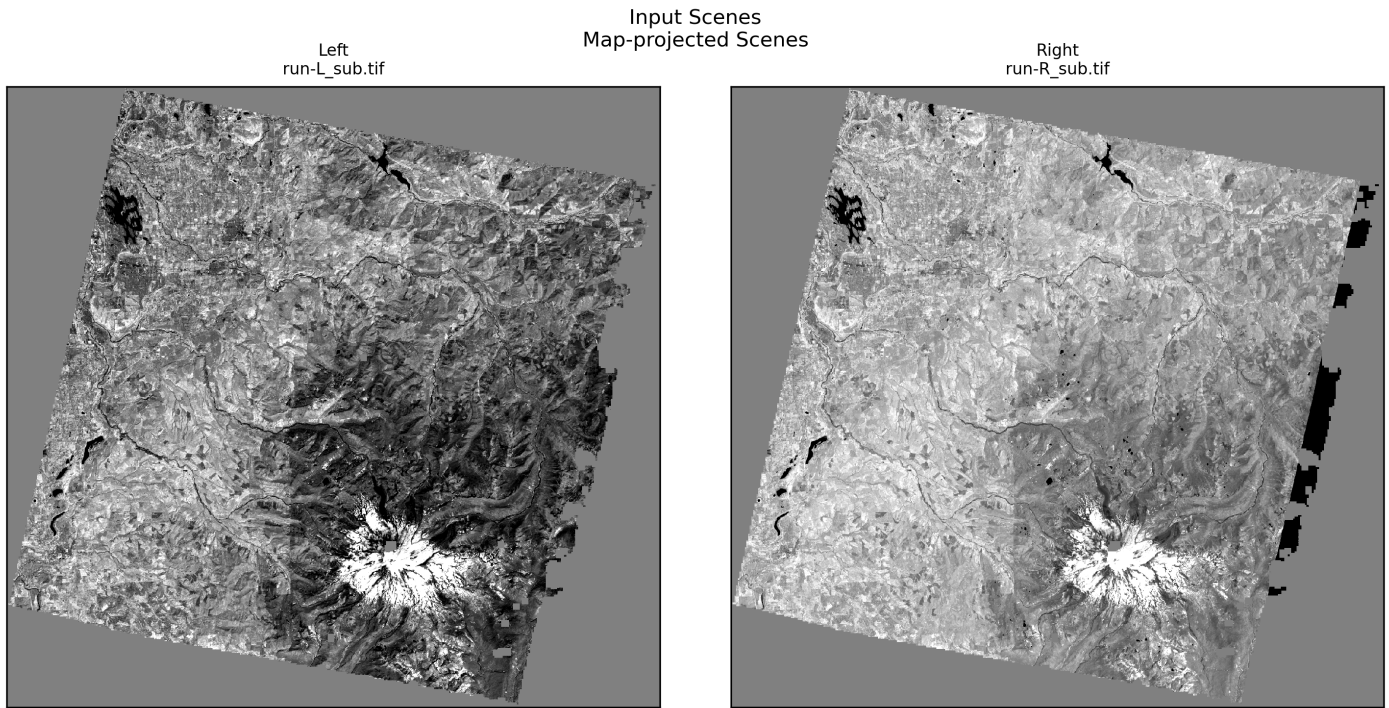


Figure 1: Left and right input scenes used for stereo processing. Non-mapprojected scenes are shown after ASP's alignment step (e.g., *affineepipolar*), which rotates images to create horizontal epipolar lines for correlation. Mapprojected scenes have been orthorectified with RPCs against a reference DEM to roughly align the two images prior to correlation, which reduces the disparity search range; they are displayed here in their map-projected orientation.

Match Points

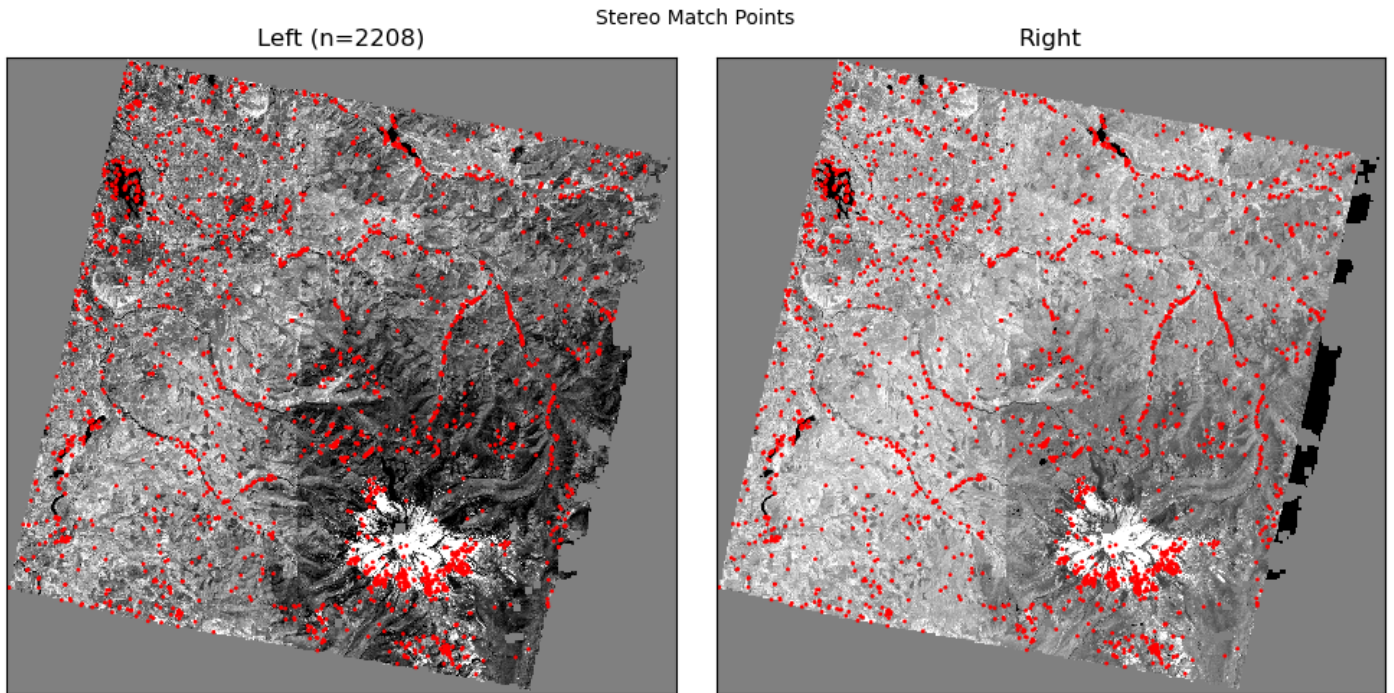


Figure 2: Interest point matches between left and right images. These are produced by `stereo_corr` during its initial interest point matching step, which is used to set the search windows for subsequent dense correlation (not the dense correlation matches themselves).

Disparity

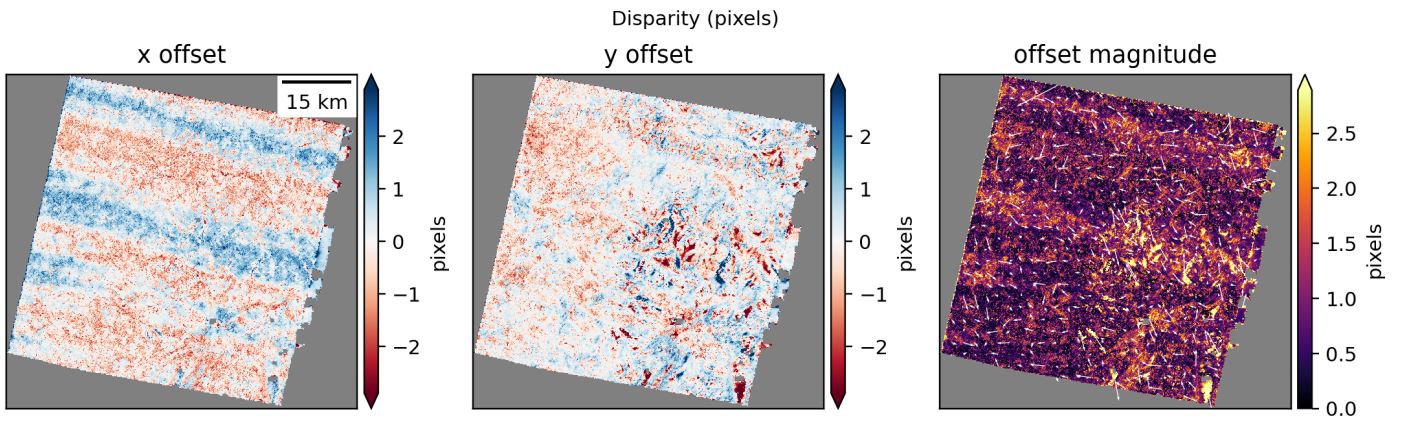


Figure 3: Horizontal and vertical disparity maps in pixels with quiver overlay.

DEM Results

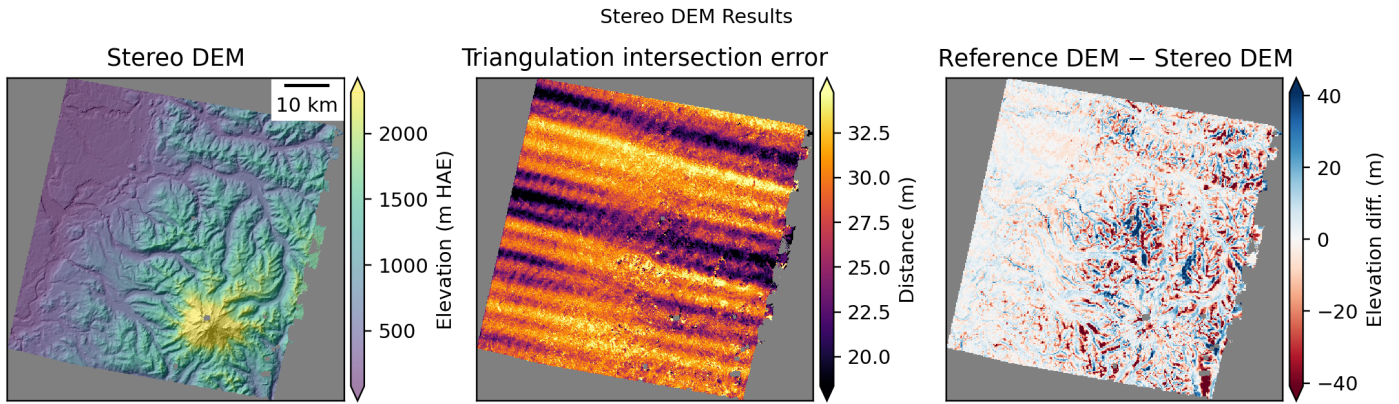


Figure 4: Output DEM with intersection error map and difference relative to the reference DEM used in processing.

Detailed Hillshade

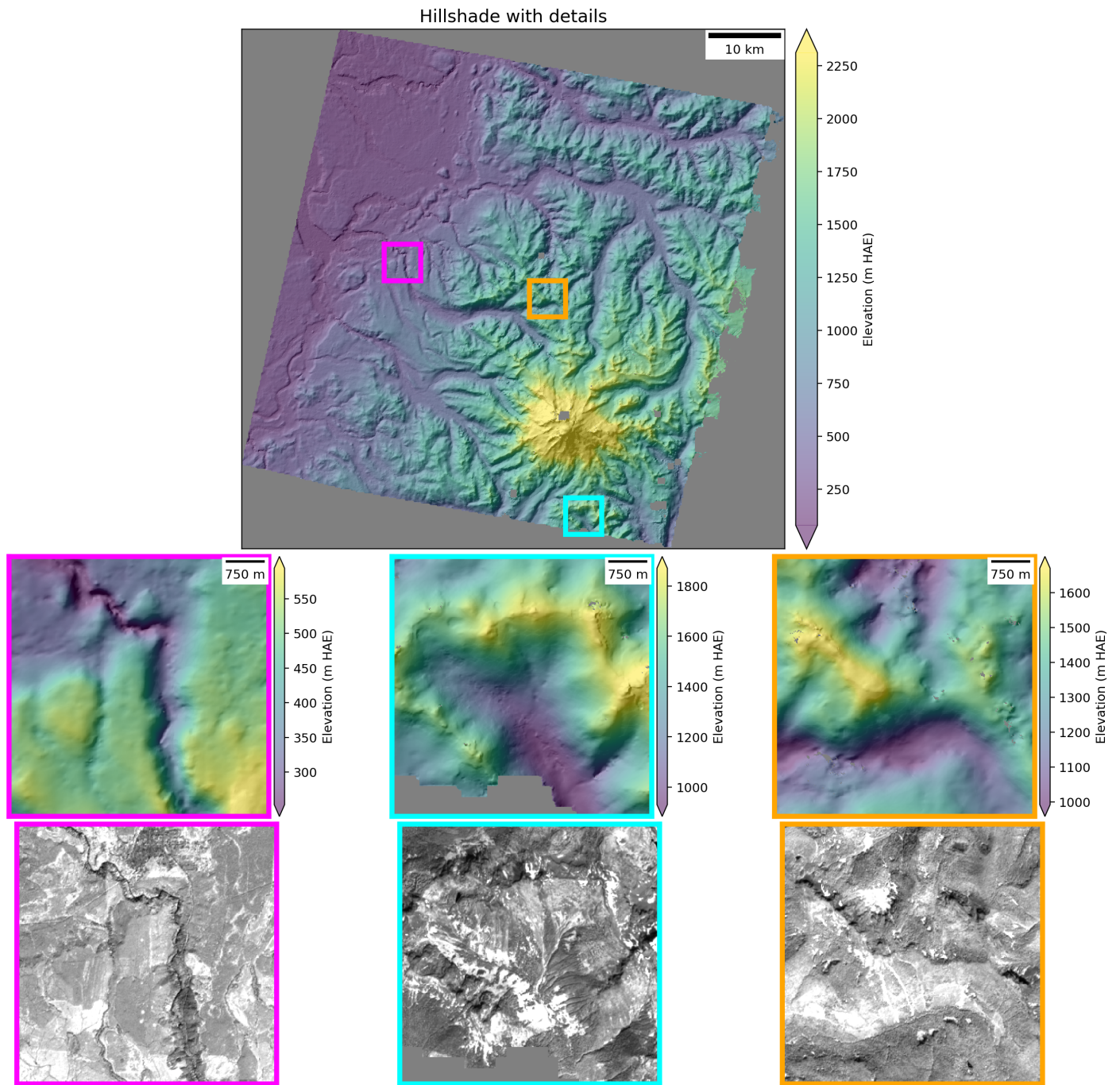


Figure 5: DEM hillshade. If the intersection error is available, zoomed subsets selected from low, medium, and high (left to right) uncertainty areas are displayed in the second row. If the mapprojected image is available, corresponding ortho image subsets are displayed in the bottom row.

ICESat-2 ATL06-SR Map

ICESat-2 ATL06-SR
all (n=879509)
2018-10-14 to 2026-06-26

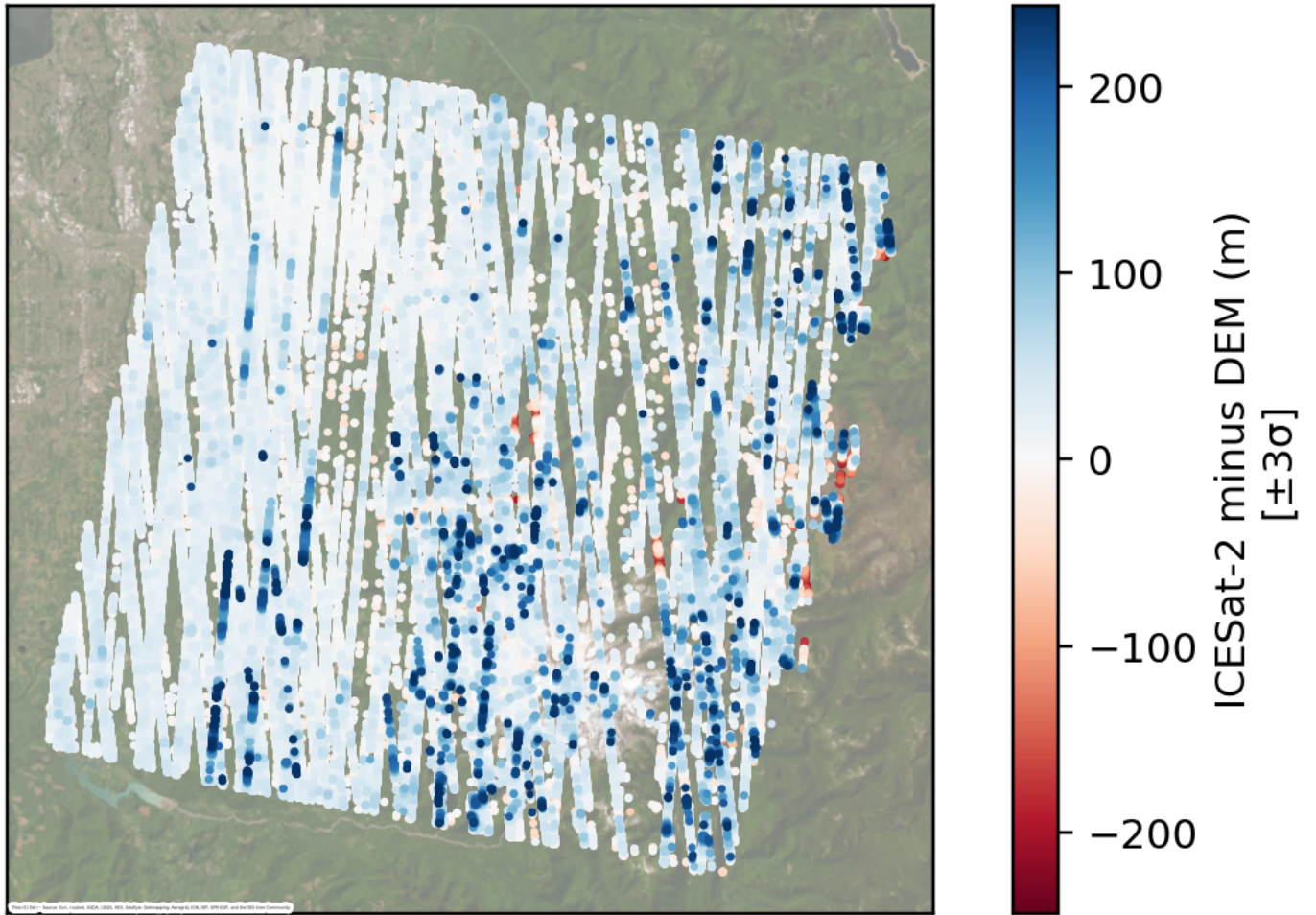


Figure 6: ICESat-2 ATL06-SR elevation differences vs. ASP DEM.

ICESat-2 ATL06-SR Histogram

ICESat-2 ATL06-SR vs DEM
all (n=572644)
2018-10-14 to 2026-06-26

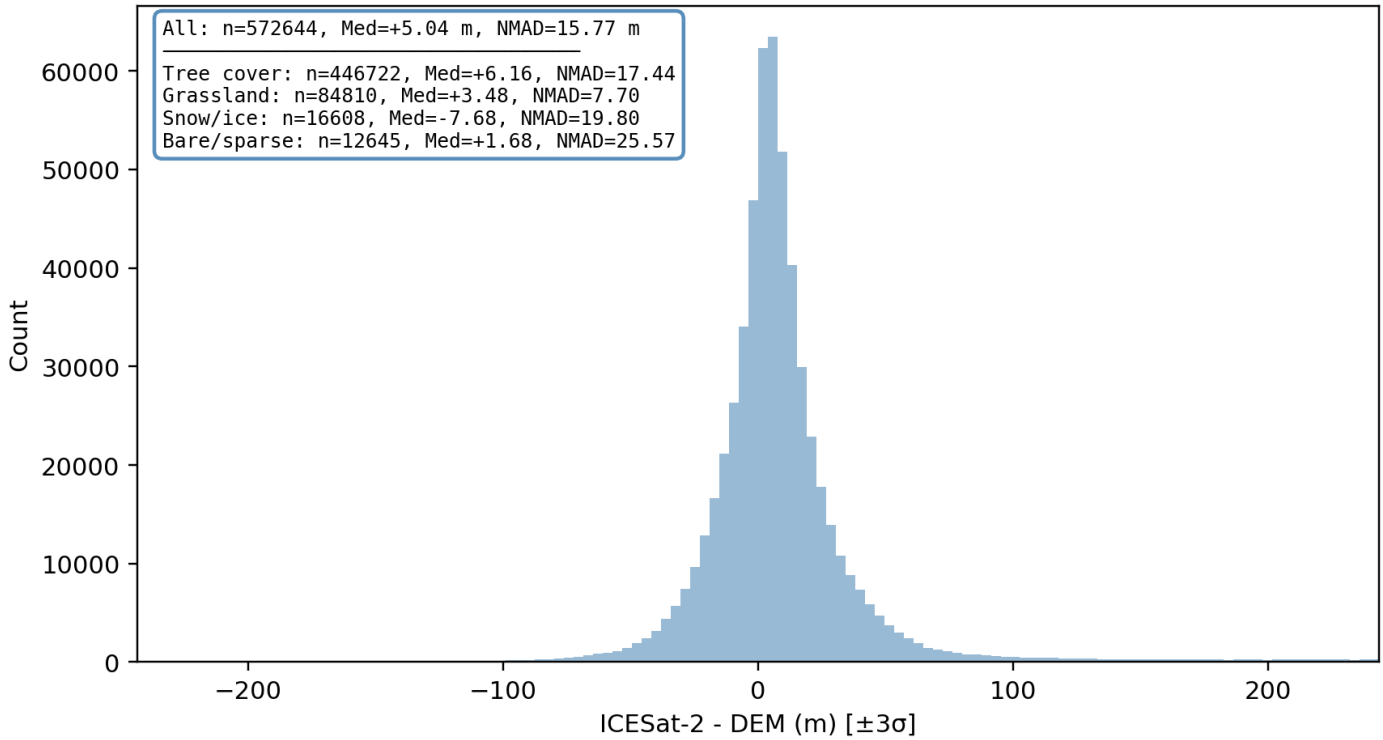


Figure 7: Distribution of elevation differences between ICESat-2 ATL06-SR and ASP DEM with per-landcover statistics.

ICESat-2 ATL06-SR Profile

RGT 829, Cycle 20, Spot 3 (2023-08-13) — n=3590
2018-10-14 to 2026-06-26

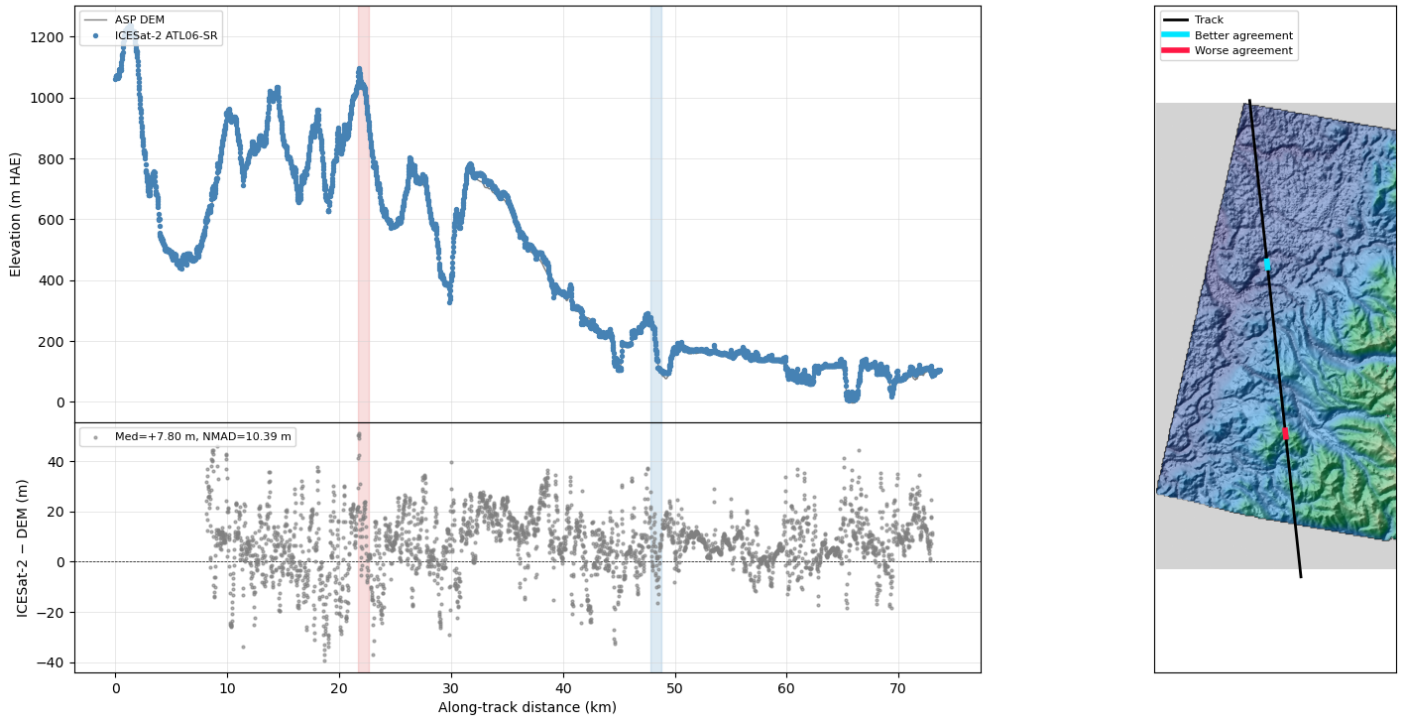


Figure 8: Elevation profile along the ICESat-2 track with the most valid points, comparing ATL06-SR and DEM heights (top) and height differences (bottom), with a context hillshade map on the right. Blue/red highlights mark the 1 km segments with better and worse agreement between ICESat-2 and the DEM.

ICESat-2 ATL06-SR Agreement Segments

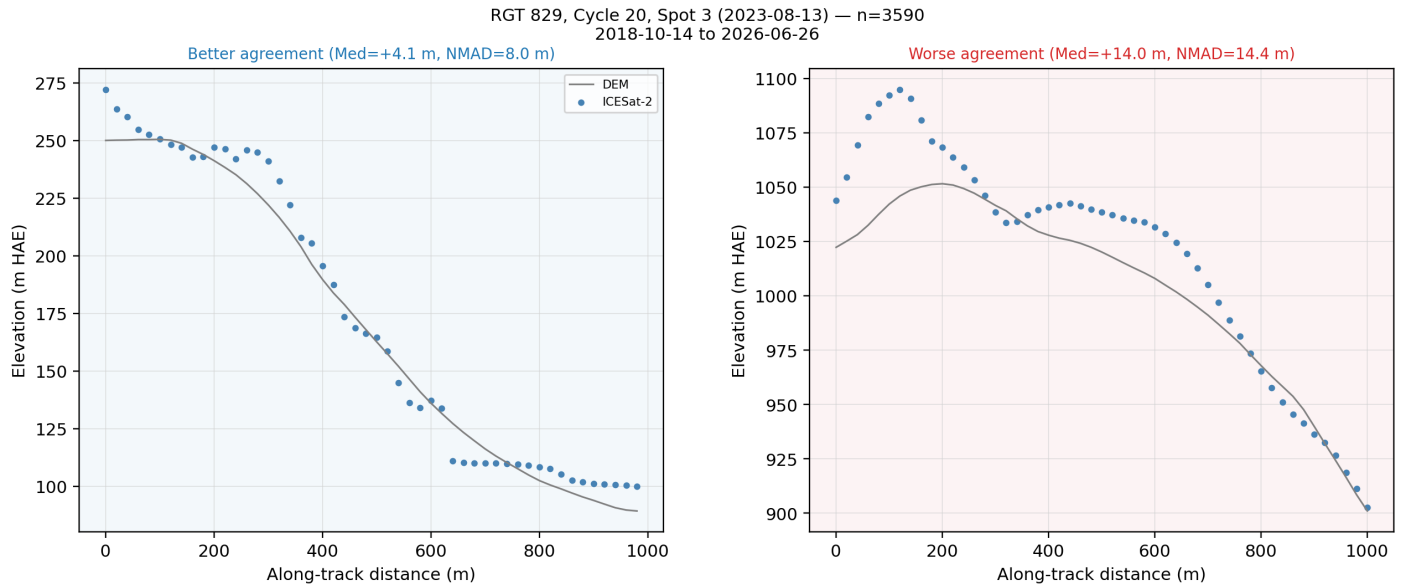


Figure 9: 1 km segments along the ICESat-2 track with better (left) and worse (right) agreement with the DEM. Segments are scored by $3 \cdot |\text{median}(dh)| + \text{NMAD}(dh)$, which weights the median bias three times more than the dispersion so that a segment with a large bias is not selected as 'better agreement' just because its NMAD is small.

DEM Alignment with ICESat-2

Alignment Parameters

Parameter	Value
processing_level	all
minimum_points	500
agreement_threshold	0.25
min_translation_threshold	0.1
improvement_threshold_pct	5.0

Alignment Statistics (m)

p16_beg	p50_beg	p84_beg	p16_end	p50_end	p84_end	N_shift	E_shift	D_shift	T
2.30	7.34	14.8	1.72	6.25	13.5	16.2	-5.06	4.25	17.5

ASP's pc_align estimates a rigid 3D translation that minimizes the height residuals between the ASP DEM and ICESat-2 ATL06-SR ground-track points used as the reference point cloud. The translation is applied to the DEM directly (geotransform + pixel-value shift, no resampling) to produce the aligned DEM.

Alignment Parameters (above):

- processing_level: ATL06-SR filter key used as the reference; 'all' uses every filtered point.
- minimum_points: minimum ATL06-SR point count required; fewer points skips the alignment.
- agreement_threshold: maximum relative disagreement across temporal sub-filters before the aligned DEM is flagged as inconsistent.
- min_translation_threshold: minimum translation magnitude (as a fraction of the DEM GSD) required to write out an aligned DEM.
- improvement_threshold_pct: minimum percentage reduction in p50 required to keep the aligned DEM on disk; below this, the aligned DEM is removed.

Alignment Statistics (above, in meters):

- p16_beg / p50_beg / p84_beg: 16th / 50th / 84th percentile of the DEM-vs-ICESat absolute height residuals before alignment.
- p16_end / p50_end / p84_end: same percentiles after alignment.
- N_shift / E_shift / D_shift: north / east / down components of the applied translation vector.
- |T|: magnitude of the translation vector.

p50 improved from 7.34 m -> 6.25 m (14.8% reduction). Aligned DEM written to /Users/ben/Desktop/asp-plot-examples/aster/out_stereo_proj/run-DEM_pc_align_translated.tif.

ICESat-2 ATL06-SR Histogram (Aligned DEM)

ICESat-2 ATL06-SR vs DEM
 all (n=572644)
 2018-10-14 to 2026-06-26

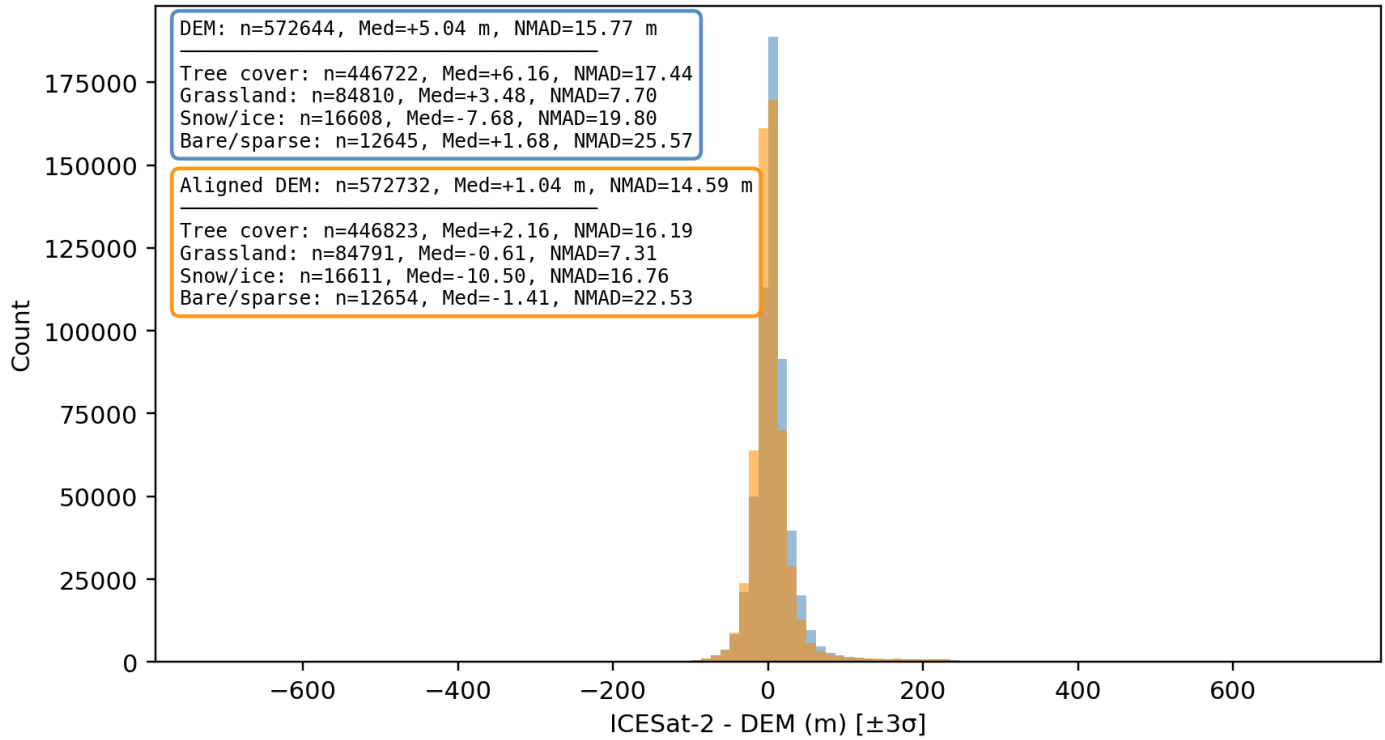


Figure 11: Pre- (steelblue) and post-alignment (orange) distributions of ICESat-2 minus DEM height differences, with per-landcover statistics in the two stacked text boxes. Box outline color matches the bar color.

ICESat-2 ATL06-SR Profile (Aligned DEM)

RGT 829, Cycle 20, Spot 3 (2023-08-13) — n=3590
2018-10-14 to 2026-06-26

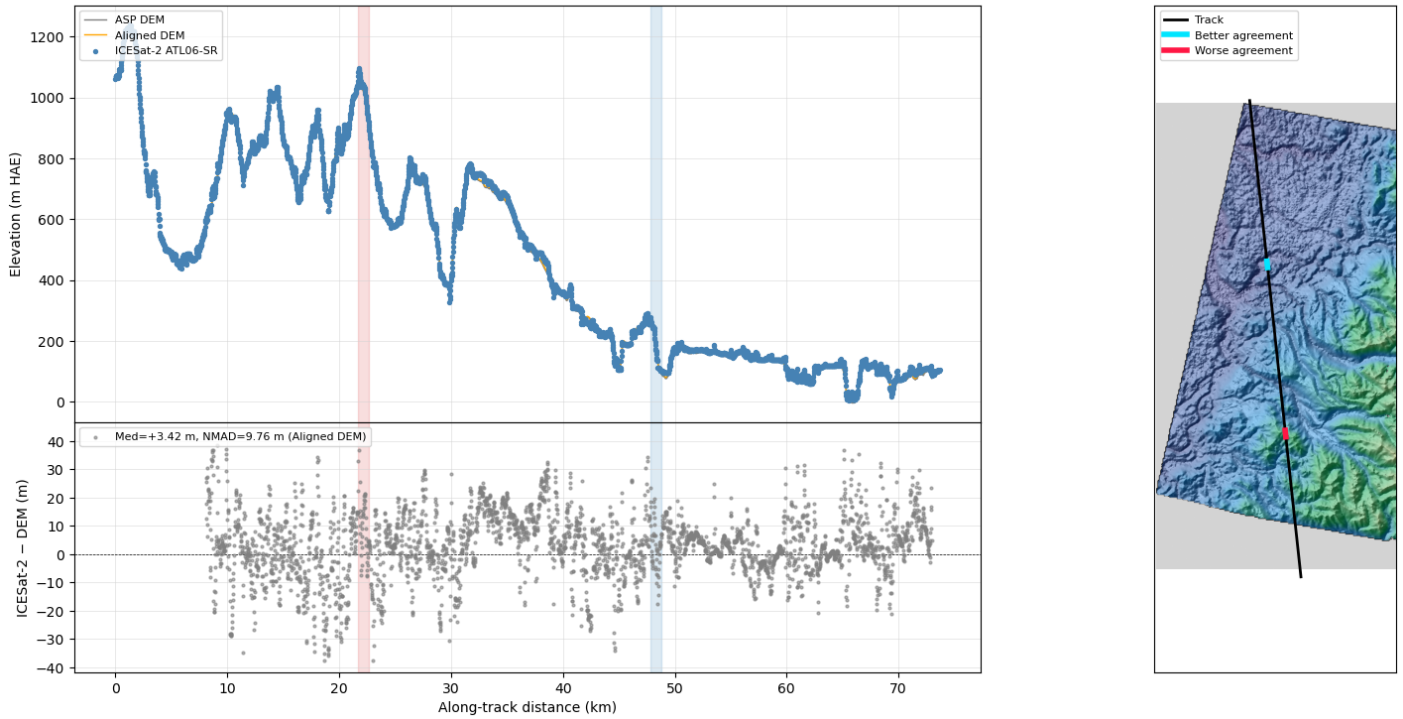


Figure 12: Elevation profile along the ICESat-2 track after `pc_align`. The aligned DEM is overlaid on the profile and used to recompute the height differences shown in the lower panel.

ICESat-2 ATL06-SR Agreement Segments (Aligned DEM)

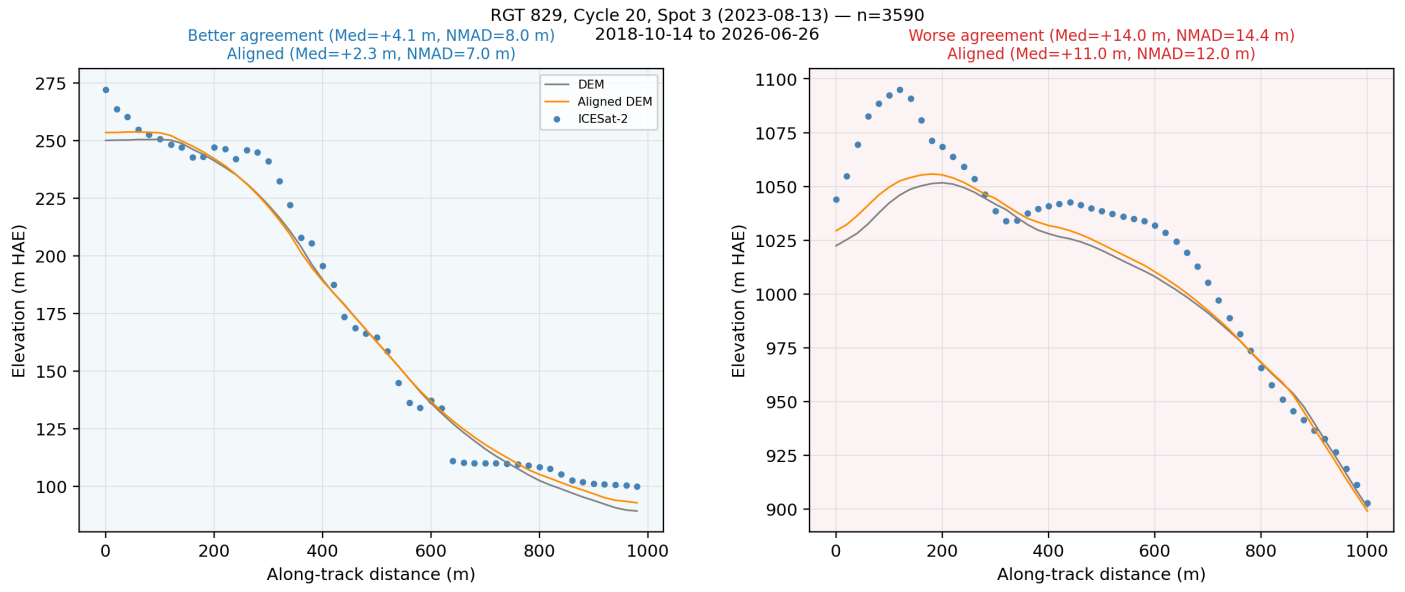


Figure 13: The same better- and worse-agreement segments as above, now with the aligned DEM overlaid. Segment selection is held fixed so Median/NMAD can be compared directly.